

WEEK

2

TERM 1
2020

NEWSLETTER

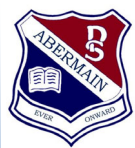
Thursday 6th February, 2020

ABERMAIN PUBLIC SCHOOL

Principal: Ian Lamph and Debbie Bower

Ph: 4930 4210

Email: abermain-p.school@det.nsw.edu.au



**SAFE, RESPECTFUL
LEARNERS**



VISION STATEMENT

As a learning community we know, value and care for every child. We share responsibility to nurture, guide, inspire and challenge students. High quality teaching develops confident and creative individuals with the personal resources for future success and wellbeing.

OUR 2020 SCHOOL LEADERS



Traie, Layla, Daelin, Felicity, Ivy and Cooper



2020 HOUSE LEADERS



LAWSON - Bethany and Jackson



HUNTER - Mya and Travis



EDGEWORTH - Hayley and Krystal



SHORTLAND - Emily and Mia



WELCOME KINDERGARTEN 2020



A very big welcome to our 2020 Kindergarten students who have all had a wonderful start to school.



PRINCIPAL'S REPORT

We would like to welcome everyone back to another exciting year at Abermain Public School.

We hope you have had an enjoyable holiday and are ready for and looking forward to Term One.

We welcome a number of new staff to our wonderful school including Mrs Thomsen, Miss Prior and Mrs Ford!

We also acknowledge and thank Mrs King for her service to our school community as she celebrates her 20th year at Abermain Public School. Thank you Mrs King!

2020 Class Teachers

EARLY STAGE ONE:	KT - Miss Trotter	KF - Mrs Ford
STAGE ONE:	1/2R - Miss Rowsell	1/2T - Mrs Thomsen
	1/2W - Mrs Wright	
STAGE TWO:	3/4P - Miss Prior	3/4S - Mrs Symonds
	3/4E - Mrs Percy and Mr Checkley	
STAGE THREE:	5/6G - Miss Gylar	5/6MB - Mrs McGee and Mrs Britton
	5/6B - Mr Bridge	

Teaching staff who are providing in class support include Mrs Bailey, Mrs Robinson, Mrs McLennan, Mr Power, Mrs Hourigan and Mr Checkley.

If you need to contact class teachers please contact the school and make an appointment to ensure the teacher can set aside time to meet with you as they need to be ready for their classes in the morning and may have training sessions in the afternoon that they need to attend.

Our Executive team consists of ourselves and Mrs Roberson, Mrs Gibbs, Mr Power and Ms Stokes. Please do not hesitate to speak to us if needed.

2020 SCHOOL Bell times

School Bell times throughout the day have been slightly altered this year.

Starting time:	9:10am Move to class lines	9:15am Ready for class (No change)
Lunch:	11:15am -11:30 am (Eating time)	11:30am -11:55am (Playground / activity groups)
Recess:	1:50pm -2:00pm (Eating time)	2:00pm -2:25pm (Playground / activity groups)
End of school:	3.10pm Move to COLA	3:15pm End of day bell (No change)



PRINCIPAL'S REPORT continued

P&C

Our P&C meeting is on Monday 10th February, 2020 at 5pm in the meeting room. All parents/carers are welcome and encouraged to attend.

We use these meetings to share and outline information that will assist the school community in being up to date with current school organisation. During general business, attendees at the meeting are able to put forward ideas for discussion and seek clarification on aspects of school in order to deepen their understanding.

Monday's meeting will commence with the Annual General Meeting (AGM) to elect the new executive and additional positions such as the canteen supervisor and fundraising coordinator / team.

Other items that we hope to discuss and table include; establishment of dates for fundraising, charity awareness days and special events dates, swimming carnival, PBL, Anti-bullying Plan, Discipline Procedures, School Community Charter, Music Bus and any other general business items.

We are looking forward to a year of fun and learning!

Ian Lamph and Debbie Bower
Principals

2020 —STUDENT Reporting process update

Our 2018-2020 School Plan saw us action the feedback from our community regarding the reporting process, this saw us trial a new reporting process. Each Term we actioned feedback from both community and staff. The feedback provided, informed changes to both the document and the process throughout the year. The community feedback indicated that families and carers found the new process both authentic and informative. Many positive comments were made, including, "the where to next statements gave us very clear guidance on how to support and guide our child's next learning steps".

2020 will see us maintain this process of Reporting each term and this year we will continue to develop the skills of our students to participate in the process of sharing their own learning.

We will provide an opportunity once a term to catch-up with your child and their classroom teacher where you will receive a **Progress Report and Learning Plan**. You will be informed of the process for booking a catch up with staff as we move towards week 10/ 11. 2019 saw some families unable to attend school and so decided to book a phone-call catch up in with their Classroom teacher, again another successful way of continuing our communication around student learning.

If you are unable to catch up in Term One the opportunity will again arise each term. A **Progress Report and Learning Plan** will be sent home with your child at the end of term if they haven't been collected by a parent/carer at the catch-up.

If you have any questions about the school's reporting processes please do not hesitate to ask.

We are looking forward to another wonderful year of learning!

Deb Bower



THANK YOU MRS KING FOR THE LAST 20 YEARS



An interview with Mrs King by the 2020 School Leaders

What are some memorable moments from your time at Abermain?

Talent shows, school Centenary celebration and the Year 6 farewells.

When and how did you start the talent show?

18 years ago I helped Miss Craig and then took over.

What has changed the most in the last 20 years?

Student numbers have grown a lot and there have been lots of new staff members.

How did you start at Abermain Public School?

The Principal called me and asked me to support in a Kindergarten class to help a little girl.

Are there any teachers that are still here from when you started?

No, Mrs Sheldon was until recently.

What does Abermain Public School mean to you?

Abermain Public School is a big part of my family.



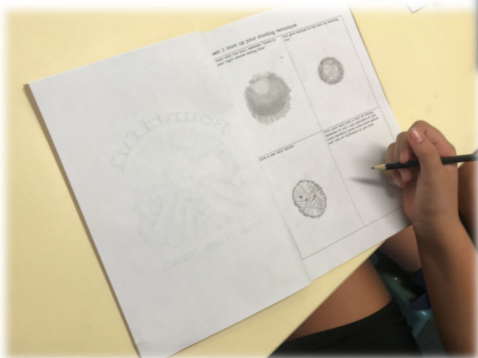
2020 SWIMMING CARNIVAL



Our annual Swimming Carnival will be held for students in Years 3-6, as well as any student turning 8 this year in Year 2. Only competitors are to attend. In order to compete at our swimming carnival, a student must be able to swim at least 25 metres competently. Please note that in order to qualify for Zone swimming, a student must be able to swim 50 metres competently.

Students not attending the carnival are expected to attend school for a normal day.


STAGE 3 ENJOYING 'IMAGINATURALISTS'





PBL SCHOOL MATRIX

As an Abermain Student

	In the right place	Moving safely	Organised	Following Instructions
Safety	<i>I am...</i> <ul style="list-style-type: none"> Always in safe places Lining up on time Following the school rules Ready 	<i>I...</i> <ul style="list-style-type: none"> Walk Have my hands by my side Think about the people around me Stay in the safe areas of the school 	<i>I...</i> <ul style="list-style-type: none"> Have tidy bags Always clean up after themselves Push my chair in Am ready 	<i>I...</i> <ul style="list-style-type: none"> Look Listen Acknowledge Respond
Respect	Using nice talk	Waiting Patiently	Valuing Themselves	Valuing Others
	<i>I...</i> <ul style="list-style-type: none"> Use a friendly look Use a friendly voice 	<i>I am...</i> <ul style="list-style-type: none"> Still Calm Quiet Thinking...Is there something else I could be doing? 	<i>I...</i> <ul style="list-style-type: none"> Believe in myself Talk nicely about myself Know that I am special in my own way Show others my special qualities Try to be the happiest I can be everyday 	<i>I...</i> <ul style="list-style-type: none"> Listen to others Talk nicely about others Know that others are special in their own way Value other peoples personal space Value others possessions
Learning	Active learners	Following instructions	Doing their best	
	<i>I...</i> <ul style="list-style-type: none"> Listen to instructions Always have your equipment organised Ask questions Think about what you are learning Try your best 	<i>I am...</i> <ul style="list-style-type: none"> Looking Listening Being Respectful Being calm and controlled Learning 	<i>I am...</i> <ul style="list-style-type: none"> Having a go Showing pride Encouraging others Trying to improve 	



SHERPA KIDS ABERMAIN

KINDERGARTEN ORIENTATION PROGRAM

Please complete an enrolment form. No fees payable for enrolment.

Kindergarten students can enjoy afternoon tea with Kindergarten only, if you wish them to attend the full afternoon the secondary fee will apply.

We are play based and provide social activities in a safe environment.

Let the students relax and play with their peers.

Afternoon tea is provided, programs include cooking and technology, art and craft, outdoor and drama activities.

Kindergarten 2.15-3.15 \$9.00 per session

After School Care 3.15 – 6.00pm \$24.00 for the whole afternoon session

Sherpa Kids is an approved provider for Child Care Subsidy.

Please call Elaine McCourt on 0410647153
or email: hunter@sherpa-kids.com.au
for further information



DO YOU REQUIRE A BREAK, HAVE APPOINTMENTS, NEED TIME OUT, WORK LONG HOURS!!!

TRY SHERPA KIDS

WE ARE HERE FOR BEFORE SCHOOL AND AFTER SCHOOL CARE AT ABERMAIN PUBLIC SCHOOL!!!

MONDAY TO FRIDAY FROM 7.00AM BEFORE SCHOOL CARE,
AFTER SCHOOL CARE AVAILABLE FROM SCHOOL END UNTIL 6.00PM.

Located in the canteen hall.

Enrolment is free,
Structured activities available
Quality Care Programs
Breakfast and Afternoon Tea Provided
Outdoor play
Imaginative and Creative Play environment
Inclusion support programs
CCB and CCR available.

Out of Pocket Fees can be as little as \$3.00 per session.

Enquiries available

Spaces available daily.

Casual and Permanent Places.

Elaine McCourt 0410 647 153 hunter@sherpa-kids.com.au



Abermain Public School's
production of



-AUDITIONS-

Thursday 12 March; Week 7 Term 1

Consider:

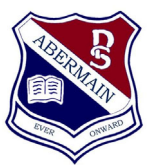
- Talk with your family about being in the main cast - it is an amazing learning opportunity and lots of fun, but also requires dedication.
- A lead role is on stage most of the show and often sings alone, a minor role is often part of a group and not on stage as often as a main role, and there are some non-singing roles too.

What you will need to do:

1. See Mrs Roberson or Mr Power in the Planning Room during lunch to sign-up and receive a script and musical score. When you sign up, you will need to let us know if you would like a *lead*, *minor* or *non-singing* role. **Sign-ups close at the end of Week 5 (Friday 28 February)**
2. Choose one role from the script to work on at home, and be ready to perform at auditions.
4. Choose one song from the score to work on at home, and be ready to perform at auditions.

Note: The audition script is for the purpose of observing performance, and does not mean it is the part the student will be assigned.

Licensed exclusively by music Theatre International (Australasia).
All performance materials supplied by Hal Leonard Australia.



School Community Charter

 **Collaborative. Respectful. Communication.**

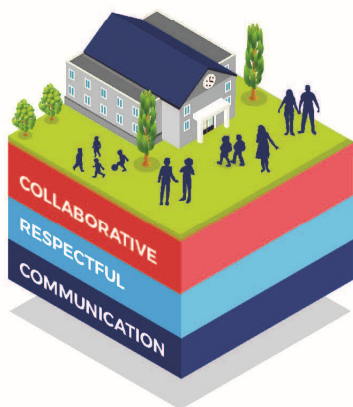
The following School Community Charter outlines the responsibilities of parents, carers, educators and school staff in NSW public schools to ensure our learning environments are collaborative, supportive and cohesive.

What our schools provide

NSW public schools work to create positive environments for students, staff and the entire school community that support student learning. We strive to ensure that every student is known, valued and cared for.

The best education happens when parents and schools work together.

The School Community Charter aligns with the NSW Department of Education Strategic Plan 2018 – 2022.



Positive environments

It is important that our NSW public schools are positive environments and that parents and carers are kept informed of students' progress and school announcements.

Parents and carers can expect:

- to be welcomed into our schools to work in partnership to promote student learning.
- communication from school staff will be timely, polite and informative.
- professional relationships with school staff are based on transparency, honesty and mutual respect.
- to be treated fairly. Tolerance and understanding are promoted as we respect diversity.

We treat each other with respect

We prioritise the wellbeing of all students and staff

Unsafe behaviour is not acceptable in our schools

We work together with the school

Ensuring respectful learning environments for all members of NSW Public Schools communities.



We create
collaborative
learning
environments

We
all play
a part

We work
in partnership
to promote
student
learning

Communicating with our schools

Our staff will find a time to talk to you when they can give you their full attention. Please remember that while our staff are in class or dealing with other matters, they may not be available to answer your questions immediately.

Our schools and communities will make sure that written communication is appropriate, fair and easy to read. We encourage you to use email and social media appropriately to connect with your school and stay up-to-date with up-coming events in the school community.

Our guide for parents, carers and students provides useful information about the complaints process: education.nsw.gov.au/about-us/rights-and-accountability/complaints-compliments-and-suggestions/guide-for-parents-carers-and-students

Respectful communication is a right

In all workplaces people have the right to feel respected. Unacceptable and offensive behaviour has no place in our school communities.

To ensure the wellbeing of students, staff and the community in our schools, steps will be taken to address unacceptable behaviour. This may include restricting contact with the school community or, in more serious cases, referral to NSW Police.



Unacceptable behaviour may include but is not limited to:

- Aggressive or intimidating actions, such as violence, threatening gestures or physical proximity.
- Aggressive or intimidating language, including the use of obscenities, making sexist, racist or derogatory comments or using a rude tone.
- Treating members of the school community differently due to aspects such as their religion or disability.
- Inappropriate and time wasting communication.



**Collaborative.
Respectful.
Communication.**

School Community Charter

education.nsw.gov.au



ADMINISTRATION OF MEDICATION AT SCHOOL

In general, schools do not administer medication to any student which has not been specifically requested by a medical practitioner for a specific condition. When a student requires prescribed medication to be administered during the school day, parents/carers are responsible for:

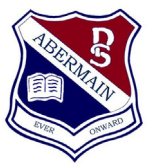
- * Completing a “Request for Support at School of a Student’s Health Condition” form for daily medication, or an “Intermittent or Emergency Medication” form. Both these forms are available from the school office and must be returned to the school office prior to commencement of medication administration.
- * Ensuring information is updated if it changes
- * Supplying the medication for administration in a timely way and in its original container or Webster pack with the students prescribed dose attached.

Please note: For the safety of all students, medication must be supplied to the school office in person by a responsible adult. Students are not to carry medications to or from the school.

In some cases medical practitioners may request students to take “over the counter” medication that does not require a prescription. NSW Health advises that this does not mean that the medication is not potentially harmful and that schools should follow the same procedures for such medications as for “prescribed medications”.

PARENT PICK UP POINT

A reminder to all parents/carers to wait on the DOTS area to pick their children up from the “Parent Pick Up Point” at the end of the school day. We ask parents/carers to please not wait outside classrooms and to only come through the front office entry if you are signing your child out early.



Student Use of Digital Devices and Online Services

Admin, Teachers, Executive, Principals, Preschool, K-6, 7-12, Metropolitan North, Rural North, Regional North, Metropolitan South, Rural South and West, Regional South .

A new policy governing student use of digital devices and online services has been released for implementation in NSW public schools from the start of Term 1 2020. The policy is available at <https://education.nsw.gov.au/policy-library>.

The new policy includes the digital device restriction for primary schools announced by the NSW Government in December 2018. From the start of Term 1 2020:

- ♦ primary schools will restrict the use of digital devices, including mobile phones during school hours. Primary-aged students will not be allowed to use digital technology during class time, recess and lunch unless for an educational purpose or where a student needs it for other reasons, such as an adjustment for disability.

DEPARTMENT OF EDUCATION CORONAVIRUS ADVICE

The Department of Education is currently working with the Ministry of Health to monitor and respond to the unfolding international novel coronavirus situation. Advice has been distributed to NSW Public Schools in accordance with advice received from the Ministry of Health.

There has been a small number of cases of confirmed Novel Coronavirus in New South Wales. In accordance with national public health guidelines, exclusions only apply for those who are a:

- Confirmed case of Novel Coronavirus – exclude until medically cleared
- Close contact of a confirmed case of Novel Coronavirus – exclude for 14 days since last contact with the confirmed case

Staff or students who have recently returned from overseas and are well, and are not close contacts of a confirmed case, are able attend work or school as normal.

Close contact is defined as living in the same household, 15 minutes face-to-face contact with a person with confirmed coronavirus in any setting, or sharing a closed space with a person with confirmed coronavirus for more than 2 hours.

The Ministry of Health has processes in place to identify any close contacts of cases confirmed in Australia. Advice about not attending school would be provided to these close contacts by the Ministry of Health.

Consistent with current guidelines, staff and students who are unwell with respiratory illness should remain at home until symptoms resolve. In accordance with our current practice if any child becomes unwell we will implement our infection control guidelines and follow the advice provided by the Ministry of Health as appropriate.

Further information and updates are available via NSW Health website;
Factsheet: <https://www.health.nsw.gov.au/Infectious/alerts/Pages/coronavirus.aspx>
FAQs: <https://www.health.nsw.gov.au/Infectious/alerts/Pages/coronavirus-faqs.aspx>



Circle of Security

INTERNATIONAL

Early Intervention Program for Parents & Children

Cessnock Family Support Service



will be presenting the Circle of Security program during Term 1 2020

Parenting can be tricky for everyone at one point or another. The Circle of Security provides a roadmap for parents to look beyond their child's behaviours and understand how to meet the underlying needs being expressed. The Circle of Security focuses on the relationship we have with our children, to give them the emotional security they need.

When: Wednesdays starting 12th February to 25th March 2020

Where: Cessnock Family Support Service

5 Hall Street Cessnock

Time: 10am to 12noon

Cost: Free.

NO Childcare available

How to be part of the program

Contact Cessnock Family Support on 4990 4507

Registration for the program is Essential

Cessnock Family Support Service Inc is funded by NSW Department of Communities and Justice



TERM 1 2020

PLAYWORKS

10 - 12

Each Monday of term, held at Koe-nara, held at Cessnock Public School
February 3 - April 6

LET'S PLAY

10 - 12

Each Tuesday of term, held at Koe-nara, held at Cessnock Public School
February 4 - April 7

STORIES AT BUNNINGS

10.30 - 12

Craft, Stories and Face-painting
February 26 & March 25

PLAYWORKS AT EAST

9 - 11

Each Thursday of term, held at Cessnock East Public School
February 6 - April 9

PLAYGROUP IN THE PARK

We are trying to avoid the heat waves so Playgroup will return again from March 20 keep an eye on our Facebook page to for a reminder.

Koe-nara is in the grounds of Cessnock Public School
For further info call 49909354 or 0428 263 854

Good for Kids good for life

PACKING AN EVERYDAY LUNCHBOX

Packing an everyday lunchbox does not have to contain fancy ingredients.

Make packing an everyday lunchbox easy by adding:

- **Crunch and Sip®:** 1 serve of fruit or vegetables
- **Recess:** 1 serve of fruit or vegetables + 1-2 everyday snacks e.g. rice crackers, yoghurt
- **Lunch:** Sandwich/wrap/roll or leftovers containing everyday ingredients e.g. pasta, fried rice
- **Drink:** Water and/or reduced fat plain milk
- Don't forget to add an **ice brick** to keep the food cool and safe

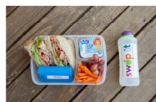
See our everyday lunchboxes below for ideas.



Crunch & Sip®: Capsicum sticks
Recess: Mini rice cakes, banana
Lunch: Multigrain wrap with chicken, cheese, carrot and lettuce
Drink: Water



Crunch & Sip®: Cherry tomatoes
Recess: Rice crackers, cucumber sticks and hummus
Lunch: Raisin bread sandwich with banana
Drink: Water, reduced fat plain milk



Crunch & Sip®: Carrot sticks
Recess: Yoghurt, grapes
Lunch: Whole meal sandwich with tuna, tomato and lettuce
Drink: Water

Whilst brands may be depicted in these images, Good for Kids has no affiliation and does not endorse any specific food brands.

NSW Health
Hunter New England
Local Health District

<http://www.goodforkids.health.nsw.gov.au>
<http://www.goodforkids.nsw.gov.au/>

Good for Kids good for life

RECIPE: TASTY SAVOURY MUFFINS

Ingredients:

- 1½ cups wholemeal self-raising flour
- 1½ cups white self-raising flour
- ¼ bunch English spinach, chopped
- ½ cup red capsicum, diced
- 1 medium zucchini, grated
- ¼ cup reduced-fat cheese
- ¼ cup parsley, chopped
- 1 cup reduced-fat milk
- 1 egg
- ½ cup canola oil
- 100g reduced-fat feta cheese, crumbled



Method:

1. Preheat oven to 220C.
2. Sieve both flours into a large mixing bowl then add spinach, capsicum, zucchini, reduced-fat cheese, parsley and mix together.
3. In a separate bowl, whisk the milk, egg and oil together.
4. Fold the egg mixture into the flour mixture until combined then add the crumbled feta. Do not over-mix.
5. Place an even amount into muffin tins and bake for 20 minutes.
6. Serve warm or at room temperature.

*Makes 19 muffins

Variations: Use any vegetables you think will taste good, especially leftovers.

Bush Tucker Tip: Replace spinach with Warrigal greens, blanching in boiling water for 2-3 minutes to cook.

Source: NSW Healthy School Canteens

NSW Health
Hunter New England
Local Health District

<http://www.goodforkids.health.nsw.gov.au>
<http://www.goodforkids.nsw.gov.au/>



Important information for parents and students

The Department recognises that family breakdowns take place. Unless there is formal notice otherwise, it is assumed that both parents have shared and equal parental responsibility for their children and both parents have been involved in decisions regarding their children's education. This also means the school recognises that each parent has equal duties, obligations, responsibilities and opportunities relating to matters involving the school.

If changes occur in your family relationship which might impact on the relationship between the school and your family, you should advise the school immediately. This includes providing copies of any relevant court orders.

TERM 1, 2020 ASSEMBLY DATES

Stage 2 and 3 (Years 3 - 6) - Monday 16th March, 2020, 2.30pm

Early Stage 1 and Stage 1 (Year K - 2) - Monday 23rd March, 2020, 2.30pm

PARKING REMINDER



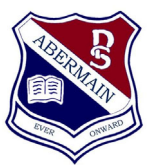
Community members have asked us to remind our families of the need to respect their driveways and nature strips and not park there while picking up or dropping off their child/ren.

There is a real concern for the safety of the children.

STUDENT ABSENCES

SMS texts will be sent to parents/carers between 9.45am and 10.00am each day to inform that an absence has been recorded for their child. Parents/carers can explain absence either by replying to the SMS text, in person, by phone, school email or a letter to the class teacher. ALL absences must be explained within seven (7) school days.

If you are having attendance issues with your child, please contact the school so we can work together to improve their attendance at school.



BUSHFIRE PROCEDURES

With both Term 4 and Term 1 considered to be during our Bush Fire period, we would like to communicate with parents/carers the bush fire procedures we have in place here at school.

During these terms staff will be regularly monitoring the NSW RFS sites for any local fire activity and if required, staff will also be consulting with Emergency Services. Regular updates will be communicated with parents/carers via direct SMS and our school Facebook page. Students diagnosed with asthma will be kept indoors and closely monitored.

All our school gates are now numbered and signs are displayed on each gate.

In the event of a directed evacuation:

If our school has received advice to evacuate, all parents/carers will be notified immediately by SMS and Facebook. This message will include:

- ◆ Request for parents/carers to organise for their child to be picked up from their classroom immediately. If parents/carers cannot arrange for their child to be picked up from school they will be asked to contact the school immediately so that students can be taken by staff to the designated refuge.
- ◆ The specific school gates (which will be identified by their numbers) that will be open to enter the school grounds to access classrooms quickly.
- ◆ Advice on the refuge students and staff will be evacuating to. This will either be McDonalds in Cessnock, or McDonalds at Kurri Kurri, depending on where the fire activity is.
- ◆ Any road closures or traffic restrictions as per updated information on www.lifetraffic.com.au.

To assist with these procedures, could you please ensure your contact details and your child's health records are kept up to date.



NSW PUBLIC SCHOOL FINDER TOOL

Please find below a link where parents/carers can find information regarding their in-zone school.

<https://education.nsw.gov.au/school-finder>

ABERMAIN PUBLIC SCHOOL PLAYGROUP

Wednesdays during School Terms

9.30am – 11.00am



ALL WELCOME!

For more information contact

Cheryl-Ann Leggatt Ph: 0414 625 872



Moved address?
New email address?
Have a new mobile phone?

**A REMINDER THAT
THERE IS TO BE NO
SMOKING WITHIN 30
METRES OF OUR
SCHOOL.**

**THIS INCLUDES
VAPING AND E
CIGARETTES**



VOLUNTEERS

If you would like to volunteer at our school during 2020 please ensure you have been to the office to complete a 2020 Volunteer Policy Agreement and an Appendix 5 or Appendix 11. Both of these forms need to be completed before commencing volunteer work at Abermain Public School.

SCHOOL WEBSITE

<http://www.abermain-schools.nsw.edu.au>

SCHOOL FACEBOOK PAGE

Abermain Public School

**NOTES WILL NOT BE REPRINTED AT SCHOOL. COPIES OF NOTES CAN BE
OBTAINED ON OUR SCHOOL WEBSITE.**

D
A
T
E
S

F
O
R

Y
O
U
R

C
A
L
E
N
D
A
R

- | | |
|-------------------------------|---|
| ♦ Monday 10th February, 2020 | P&C AGM, 5.00pm |
| ♦ Tuesday 11th February, 2020 | Annual Swimming Carnival
Kindergarten Speech Screening |
| ♦ Friday 14th February, 2020 | Stage 2 (Years 3 & 4) Taronga Zoo excursion |
| ♦ Friday 21st February, 2020 | Stage 1 (Years 1 & 2) Taronga Zoo excursion |
| ♦ Tuesday 25th February, 2020 | Kindergarten STEPS Vision Screening |
| ♦ Friday 28th February, 2020 | Beauty & The Beast Musical audition sign up closes
Last day of Kindergarten starting and finishing early |
| ♦ Monday 2nd March, 2020 | School Photos
Kindergarten students start and finish at normal time |
| ♦ Monday 9th March, 2020 | P&C Meeting, 5.00pm |
| ♦ Thursday 12th March, 2020 | Beauty & The Beast Musical auditions |
| ♦ Monday 16th March, 2020 | Stage 2 & Stage 3 (Years 3 - 6) Assembly, 2.30pm |
| ♦ Monday 23rd March, 2020 | Early Stage 1 & Stage 1 (Years K - 2) Assembly, 2.30pm |

KINDERGARTEN STUDENTS WILL START AT 9.15AM AND FINISH AT 2.30PM UNTIL FRIDAY 28TH FEBRUARY, 2020.

Parents/carers are asked to wait until 2.30pm before entering the school grounds to pick up their child from the classroom. If parents/carers would like to pick up their child earlier they will need to sign them out at the school office.