

# Enrolling your child in one of Cessnock's great public schools.



This booklet is intended as a guide to allow parents to quickly find their locally zoned schools. *Maps Current as of 6<sup>th</sup> April 2016*  
Zones however are subject to change so please confirm these with your local school who can use your residential address to confirm the most up to date zonings. Thank you for applying to enrol your child at one of our great public schools!



## Why enrol in one of our great public schools?

The 15 public schools within the Cessnock area work together co-operatively to deliver quality academic and wellbeing outcomes for over 4000 students in this community. Together, we are known as Cessnock Community of Great Public Schools (CCGPS).

## Initiatives

The schools of CCGPS collaborate to develop and implement a range of initiatives that benefit all students and families within in the Cessnock community. Using shared ideas and resources, schools have been able to pool together funds and expertise to implement a range of programs benefitting students in our schools and the wider community.

### **These include initiatives such as:**

- Fully funded Speech pathology screening for all Kindergarten students and individual programs for those at risk.
- Positive Behaviour for Learning (PBL) across all schools
- High Quality Professional learning for staff
- Sharing of information between schools, providing a wealth of knowledge in all areas
- Paint the Town REaD which boosts literacy engagement in the community
- Close links between your child's preschool and our CCGPS schools.

## The benefits of choosing a CCGPS School

### **There are many benefits to enrolling your child in one of our local public schools. These include:**

- The strength of 15 schools within CCGPS, and over 2,200 schools state wide, working together to share experience and expertise.
- A high quality education for students backed and guaranteed by the Government.
- A quality statewide system that attracts the highest quality staff.
- More professional development for staff which is accountable and tied to student priorities, ensuring it has a direct impact on student learning.
- The latest innovative learning programs backed by research and developed exclusively for public schools.
- School funds are spent directly on improving outcomes for students (not advertising and loan interest).
- Initiatives that meet our local needs, such as the Kindergarten Speech Intervention Program.
- Consistently outperforming local independent schools in NAPLAN growth ( Years 3-5 and 5-7) ensuring your child will reach their full potential regardless of their academic ability. ( courtesy MySchool)

## **Where do I enrol my child?**

Children are entitled to be enrolled at the government school that is designated for the intake area within which the child's home is situated and that the child is eligible to attend. School local areas are determined by the Department of School Education through a process involving consultation between the Properties Directorate and the district superintendent.

The CCGPS are united when enrolling of all students within the Cessnock area to ensure it is consistent with Department of Education policy and takes into account the well-being of the student. Accordingly, we encourage all families to seek enrolment for their child at their local school which should be the first point of contact.

## **Out of zone enrolment**

Schools are required to set a maximum enrolment number to cater for anticipated local demand and to seek to ensure that every eligible local child has a place at his or her local school if he or she chooses to attend it.

Parents may seek to enrol their child in a school that is not within their zone, although this is reliant on space within the school and the reasons for enrolment. **First contact should be made with your locally zoned school, before any out of zone enquiry can be processed.** This should be done in the first term of each year.

For more information about your local school, go to the following link <https://online.det.nsw.edu.au/schoolfind/locator/> or contact your school directly to confirm designated intake zones.

**We thank you for your enquiry and look forward to working with you during your child's learning path from Kindergarten to Year 12!**



# Abermain Public School

*Safe, Respectful Learners*

Goulbourn St, Abermain

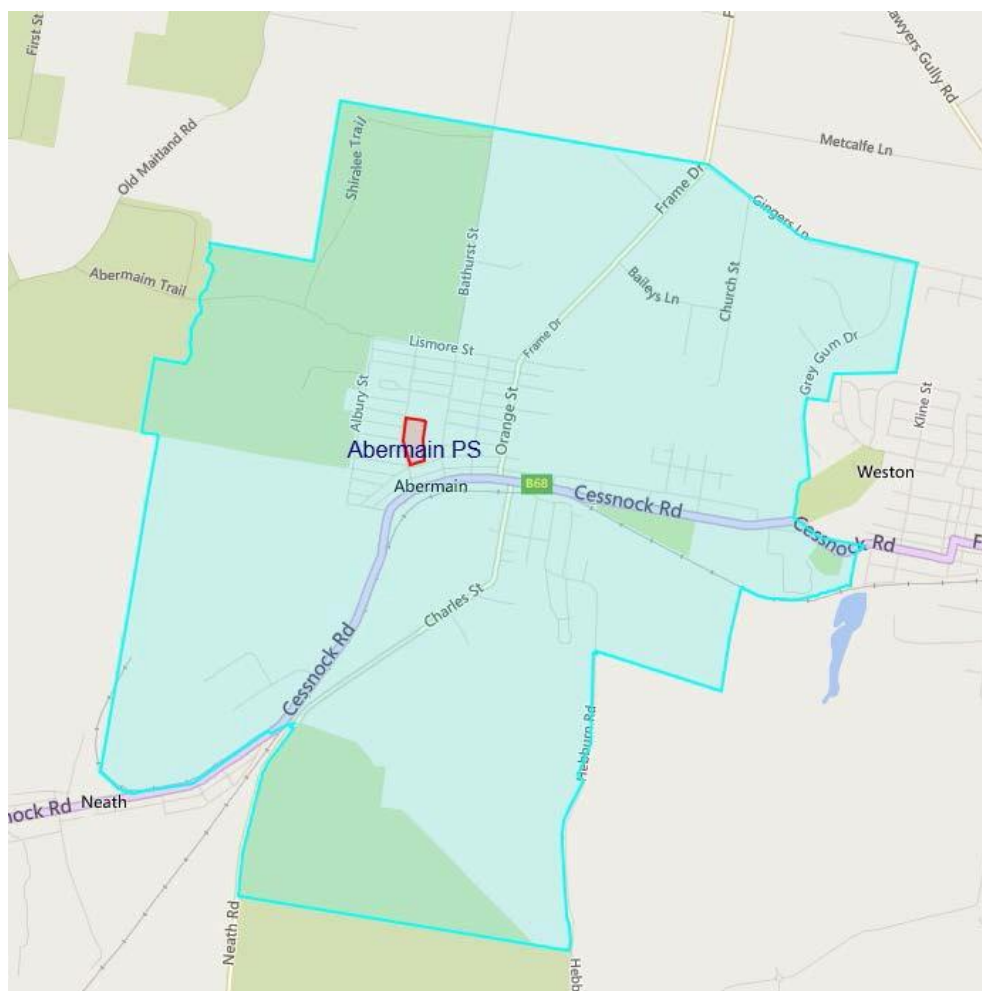
Phone: 4930 4210

Email: [abermain-p.school@det.nsw.edu.au](mailto:abermain-p.school@det.nsw.edu.au)

Web: [www.abermain-p.schools.nsw.edu.au](http://www.abermain-p.schools.nsw.edu.au)



Abermain Public School is situated in the Hunter Valley 10km east of Cessnock. The school has strong programs in Literacy, Maths and Student Welfare. It is committed to improving educational outcomes for students by providing quality teaching and range of initiatives.



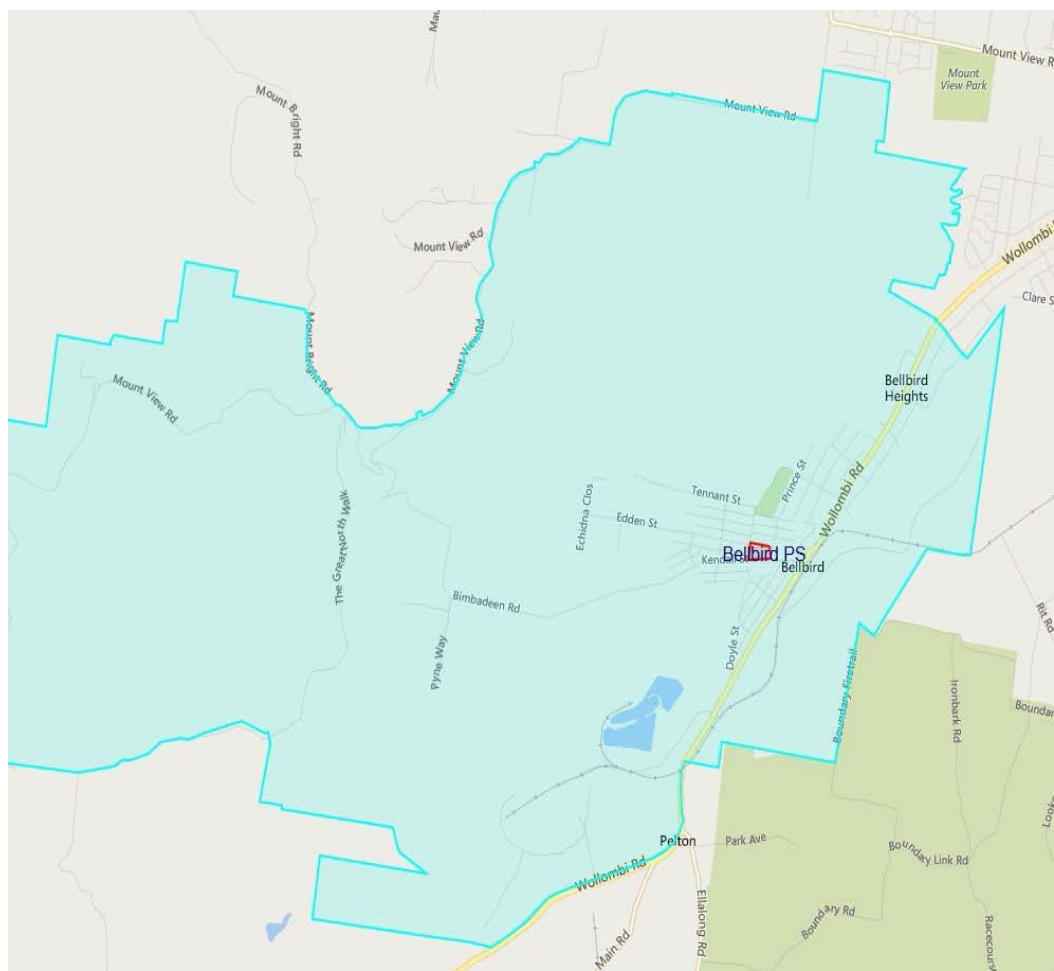
# Bellbird Public School

13 Doyle St, Bellbird 2325

Phone: 02 4990 2331

Email: [bellbird-p.school@det.nsw.edu.au](mailto:bellbird-p.school@det.nsw.edu.au)

Web: [www.bellbird-p.schools.nsw.edu.au](http://www.bellbird-p.schools.nsw.edu.au)



Bellbird Public School is a welcoming and friendly school committed to delivering quality education for every child. Our professional and highly skilled teachers are committed to nurturing the best possible outcomes for all students.





# Cessnock East Public School

*Promoting Excellence, Creating Success*

Old Maitland Road, Cessnock 2325

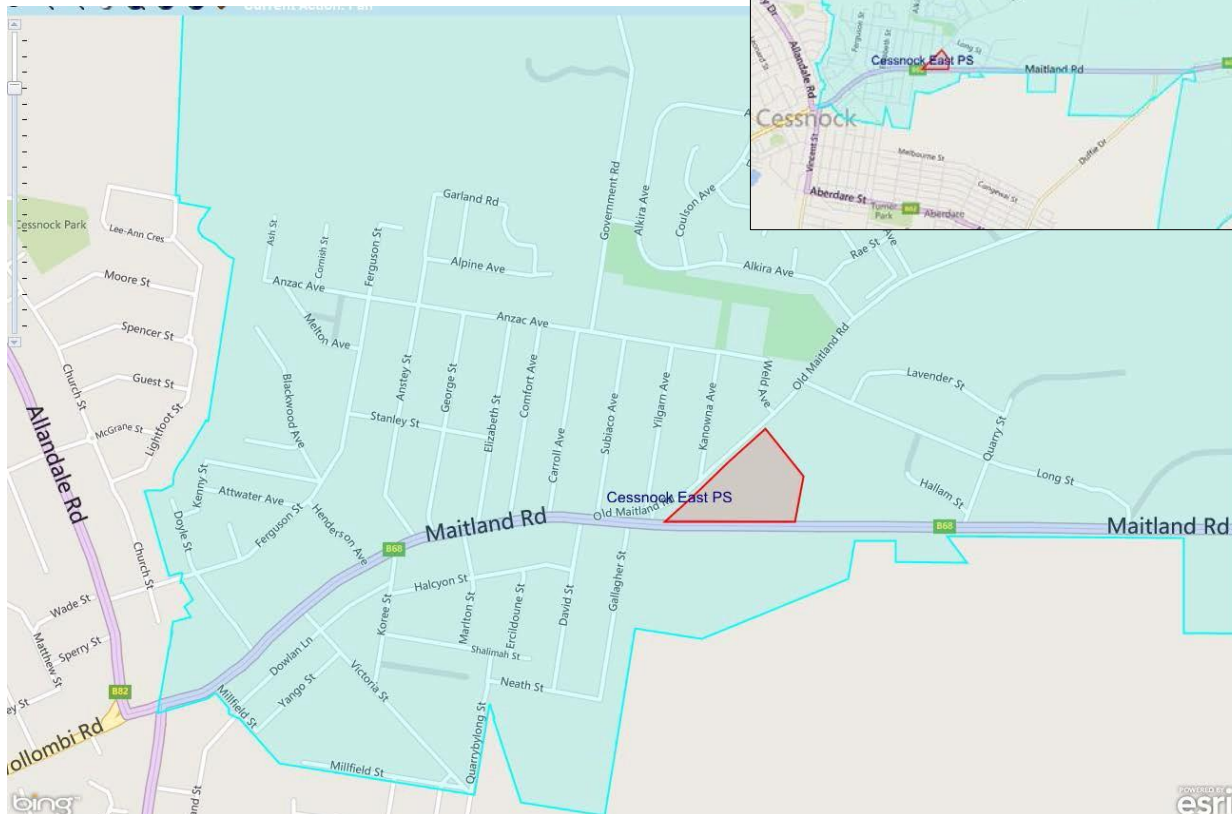
Phone: 49901549

Email: [cessnocke-p.school@det.nsw.edu.au](mailto:cessnocke-p.school@det.nsw.edu.au)

Web: [www.cessnocke-p.school@det.nsw.edu.au](http://www.cessnocke-p.school@det.nsw.edu.au)



Cessnock East has high expectations and promotes a learning environment that inspires children to reach their full potential and become lifelong learners. We aim to foster creative thinkers, inquisitive questioners and avid problem solvers.





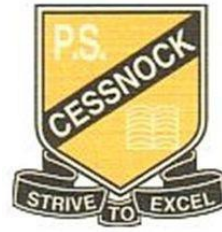
# Cessnock Public School

Rawson Street, Cessnock 2325

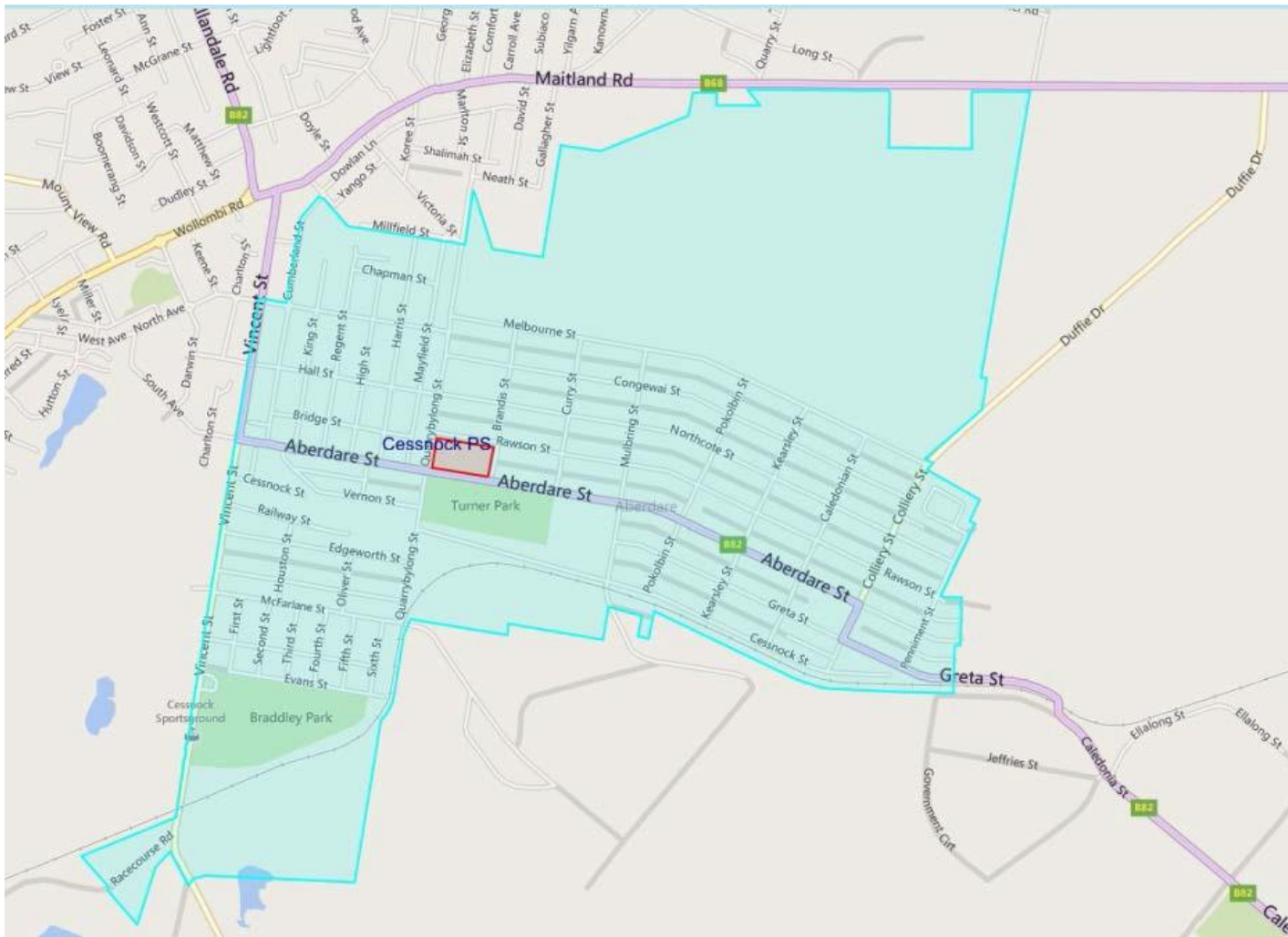
Phone: 4990 1652

Email: [cessnock-p.school@det.nsw.edu.au](mailto:cessnock-p.school@det.nsw.edu.au)

Web: [www.cessnock-p.schools.nsw.edu.au](http://www.cessnock-p.schools.nsw.edu.au)



Cessnock Public School is a proud member of the Cessnock Community of Great Public Schools. Staff and students work together to create a safe, happy and healthy atmosphere where we can all grow and learn together, improving student outcomes.





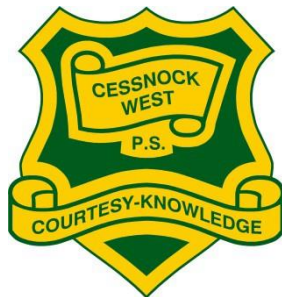
# Cessnock West Public School

Wollombi Rd, Cessnock 2325

Phone: 4990 1637

Email: [Cessnockw-p.school@det.nsw.edu.au](mailto:Cessnockw-p.school@det.nsw.edu.au)

Web: [www.cessnockw-p.schools.nsw.edu.au](http://www.cessnockw-p.schools.nsw.edu.au)



Cessnock West Public School is a proud member of the Cessnock Community of Great Public Schools and is committed to giving each child every opportunity through a culture of improvement, achievement and well-being. The school aims to provide an innovative 21<sup>st</sup> Century education across all areas of the curriculum in an inclusive, engaging and supportive school environment.





# Congewai Public School

605 Congewai Road, Congewai

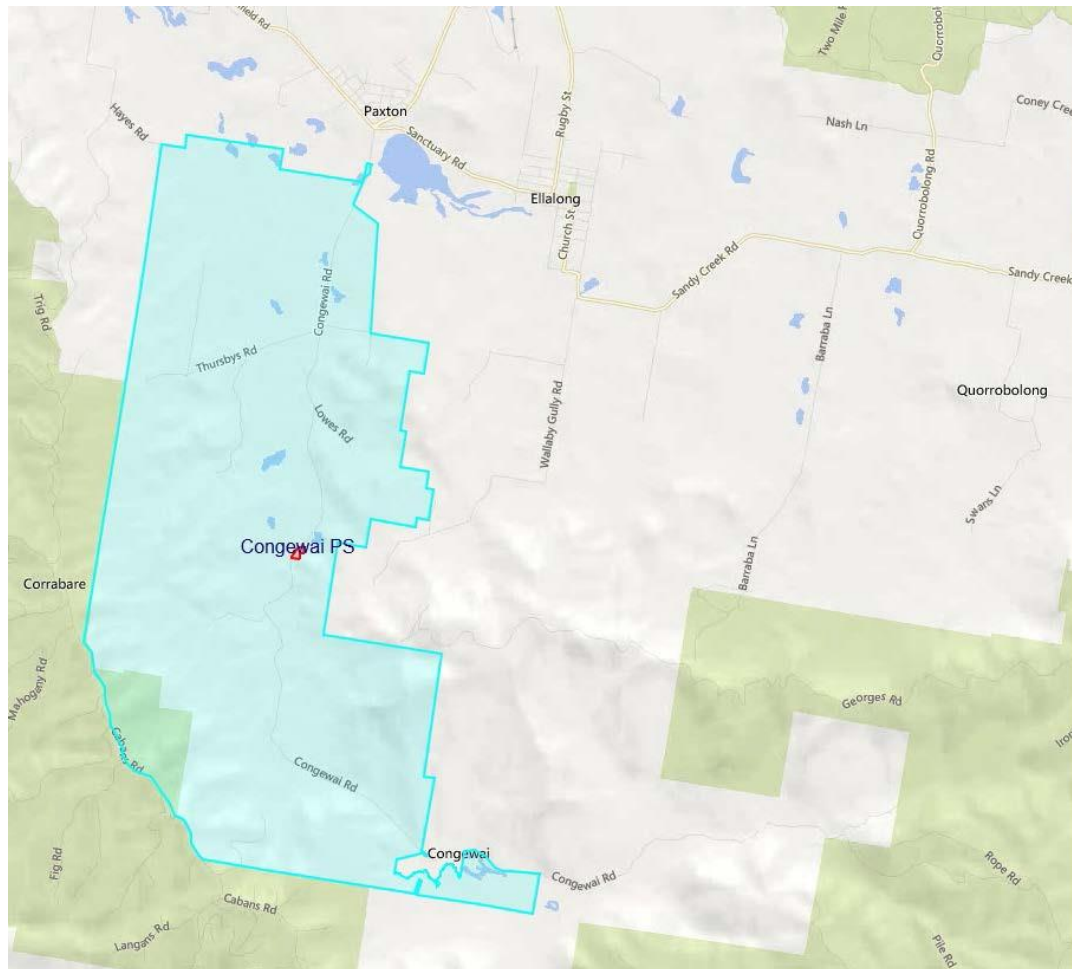
Phone: 49981366

Email: [congewai-p.school@det.nsw.edu.au](mailto:congewai-p.school@det.nsw.edu.au)

Web: [www.Congewai-p.schools.nsw.edu.au](http://www.Congewai-p.schools.nsw.edu.au)



At Congewai Public School, small teacher to student ratios ensure individual attention to learning, maximising success in a fun and dynamic way, to make achievement an essential for every student. Congewai Public School is a proud member of the Cessnock Community of Great Public Schools.



# Ellalong Public School

Helena Street, Ellalong 2325

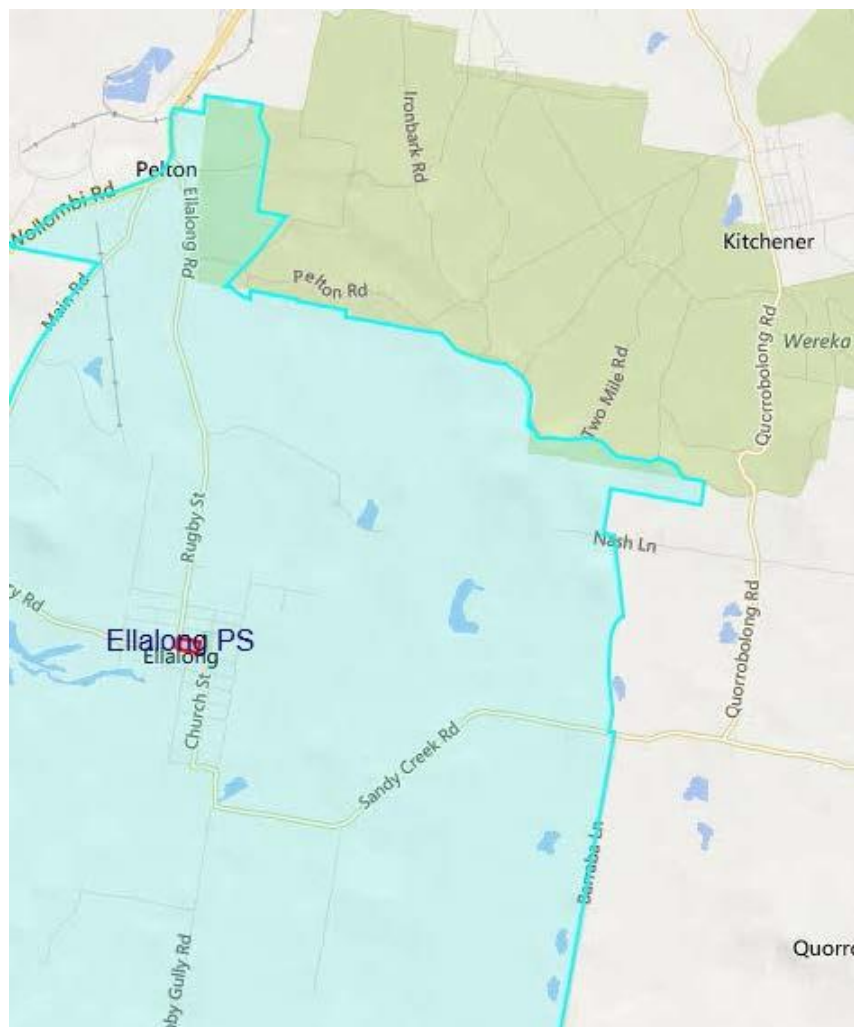
Phone: 49981360

Email: [ellalong-p.school@det.nsw.edu.au](mailto:ellalong-p.school@det.nsw.edu.au)

Web: [www.ellalong-p.schools.nsw.edu.au](http://www.ellalong-p.schools.nsw.edu.au)



Ellalong Public School strives to provide a supportive learning environment where students are challenged to achieve their academic, civic and social potential. Our school enjoys strong community support and is a proud member of the Cessnock Community of Great Public Schools.





# Kearsley Public School

130 Caledonia Street, Kearsley 2325

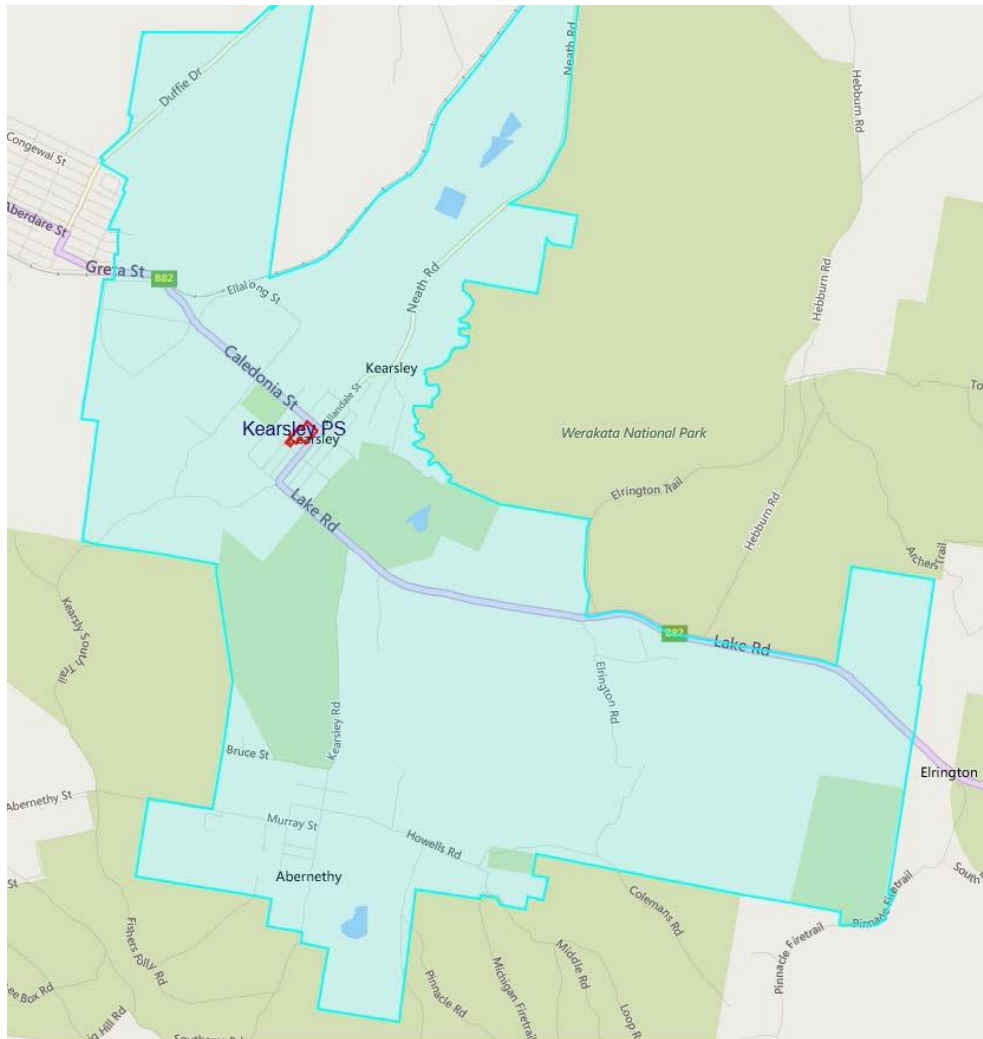
Phone: 49901705

Email: [kearsley-p.school@det.nsw.edu.au](mailto:kearsley-p.school@det.nsw.edu.au)

Web: [www.kearsley-p.schools.nsw.edu.au](http://www.kearsley-p.schools.nsw.edu.au)



Kearsley Public School is a proud member of the Cessnock Community of Great Public Schools. Kearsley Public School provides a stable, caring environment which promotes tolerance and encouragement. The well-presented school buildings and welcoming landscaped play areas are conducive to learning. "Individuals Achieving Goals Together".



# Kitchener Public School

*"Students will have success for today and be prepared for Tomorrow"*

38 Richmond Street, Kitchener

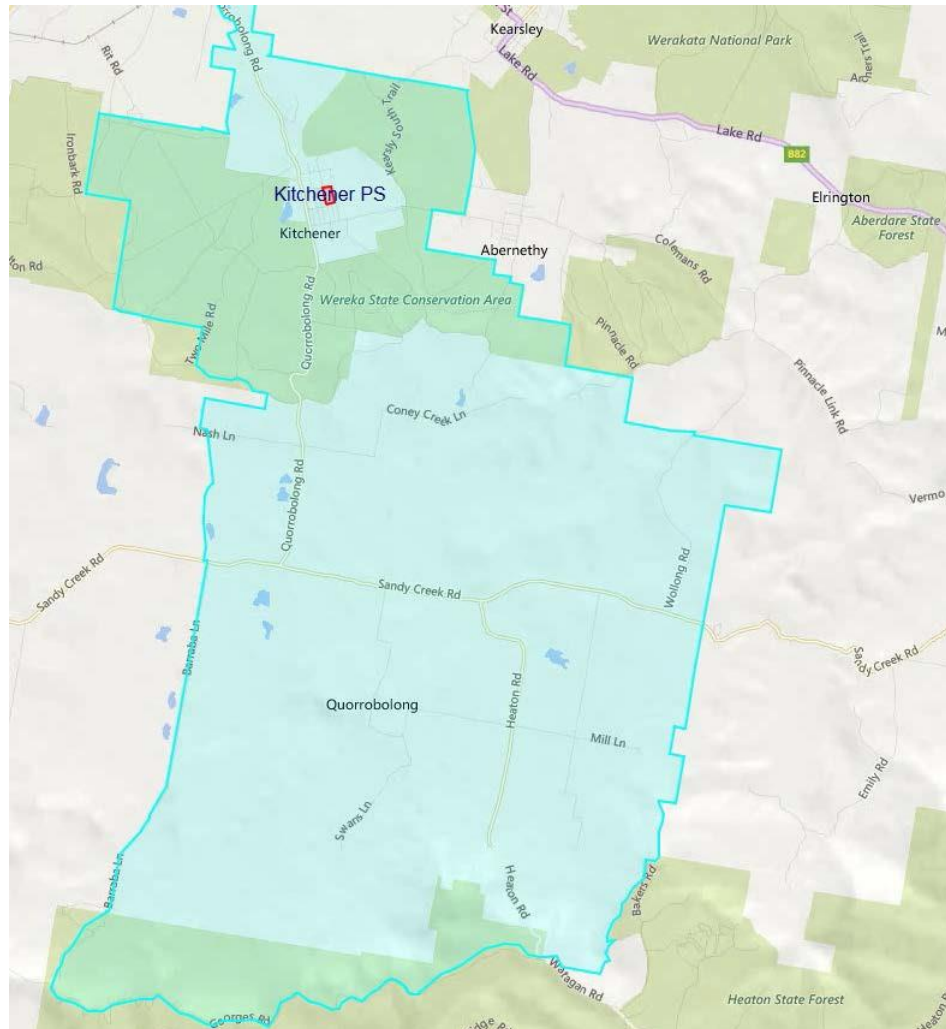
Phone: 4990 2974

Email: [kitchener-p.school@det.nsw.edu.au](mailto:kitchener-p.school@det.nsw.edu.au)

Web: [www.kitchener-p.schools.nsw.edu.au](http://www.kitchener-p.schools.nsw.edu.au)



Kitchener Public School is proud member of the Cessnock Community of Great public Schools. We are **"Aiming High"** to prepare our students, teachers and community for a rapidly changing **21<sup>st</sup> Century**. We offer within our learning environment of High Expectations, progressive classroom practice, fostered community participation, active collaboration and positive relationships.





# Laguna Public School

3738 The Great North Road, Laguna

Phone: 4998 8251

Email: [laguna-p.school@det.nsw.edu.au](mailto:laguna-p.school@det.nsw.edu.au)

Web: [www.laguna-p.schools.nsw.edu.au](http://www.laguna-p.schools.nsw.edu.au)



Laguna Public School is a small school set in the beautiful bushland environment of the Wollombi Valley. We actively maintain a strong school culture of care, inclusiveness and respect. Students are encouraged to achieve their potential through a variety of rich and diverse learning activities.



\*New zoning 2016 includes Wollombi Township and surrounds



# Millfield Public School

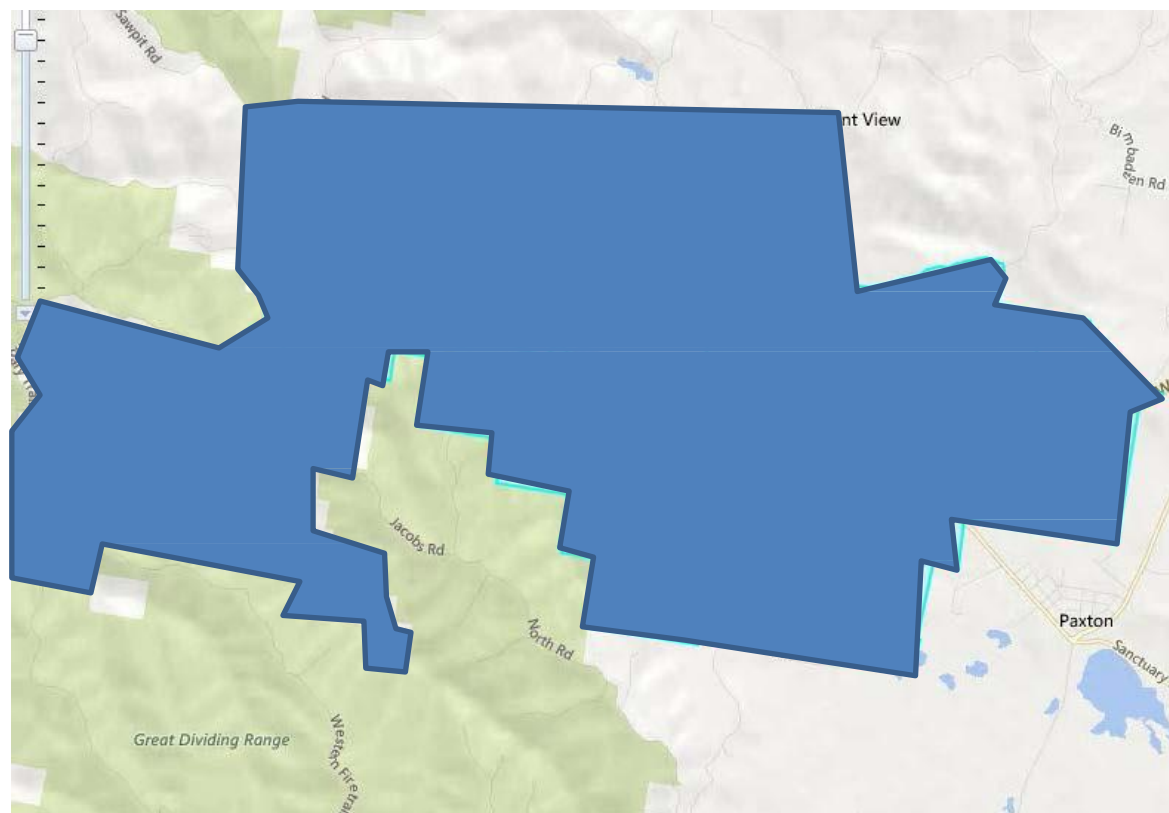
*"Where bright futures begin"*

105 Wollombi Road, Millfield 2325

Phone: 49981331

Email: [millfield-p.school@det.nsw.edu.au](mailto:millfield-p.school@det.nsw.edu.au)

Web: [www.millfield-p.schools.nsw.edu.au](http://www.millfield-p.schools.nsw.edu.au)



\*Zoning Change in 2016 to include Sweetman's Creek and Mount View Road to Mount Baker Rd.



Millfield Public School provides a student centred learning environment to ensure all students reach their full potential. There is a strong emphasis on the development of students' literacy, numeracy, social and sports skills through personalised programs and innovative teaching and learning.





# Nulkaba Public School

5 O'Connors Road, Nulkaba 2325

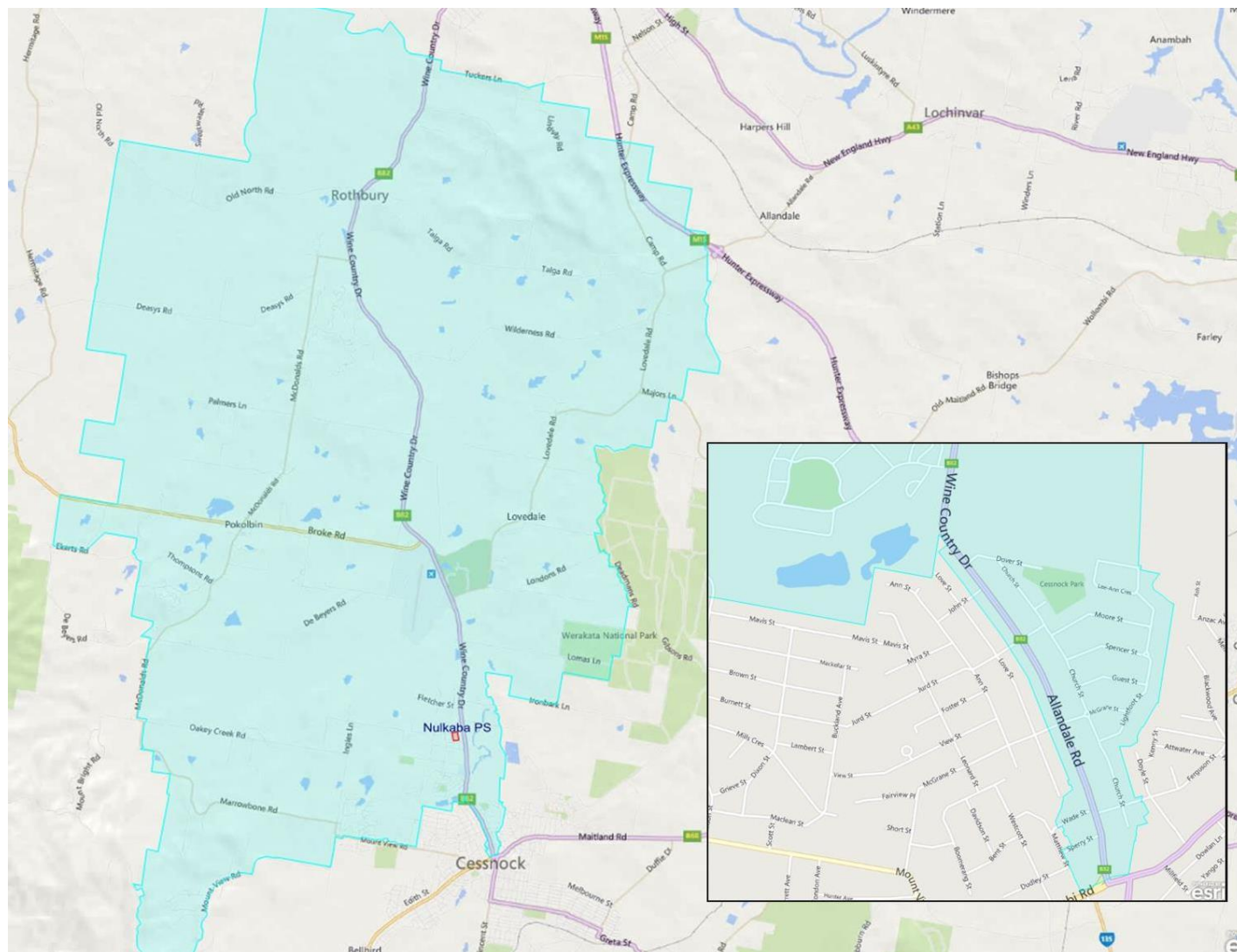
Phone: 4990 1805

Email: [Nulkaba-p.school@det.nsw.edu.au](mailto:Nulkaba-p.school@det.nsw.edu.au)

Web: [www.Nulkaba-p.schools.nsw.edu.au](http://www.Nulkaba-p.schools.nsw.edu.au)



Nulkaba Public School is a proud member of the Cessnock Community of Great Public Schools. Through excellence, flexibility and a vigorous learning program the staff provide a vast array of opportunities for the students. With a vibrant school community we envisage a future of continued growth and success.



# Paxton Public School

20 Anderson Avenue, Paxton, 2325

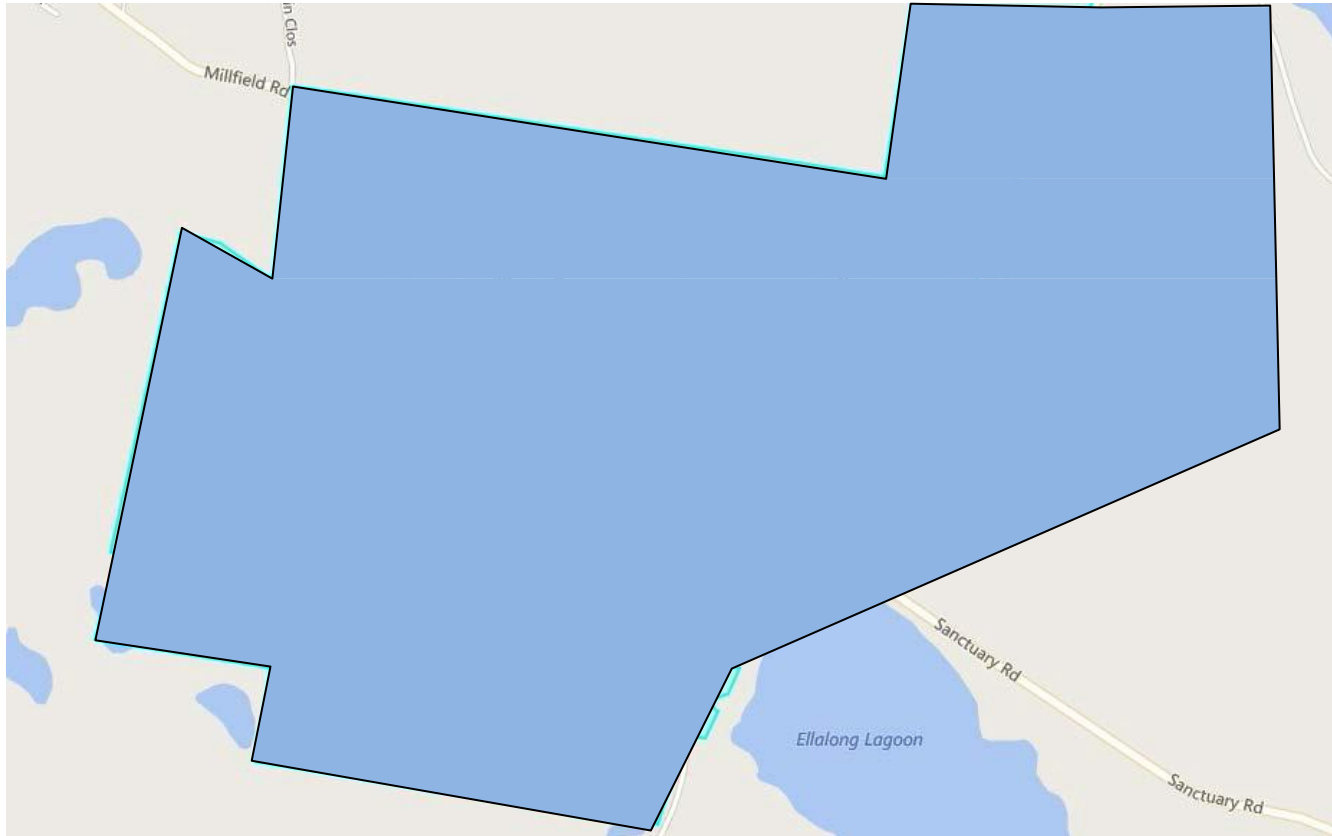
Phone: 49981278

Email: [paxton-p.school@det.nsw.edu.au](mailto:paxton-p.school@det.nsw.edu.au)

Web: [www.Paxton-p.schools.nsw.edu.au](http://www.Paxton-p.schools.nsw.edu.au)



Paxton Public School is a proud member of the Cessnock Community of Great Public Schools. Parents, students and teachers all strive for the best by aiming high. We are a friendly inclusive school who support the Paxton STAR values of Safety, Teamwork, Achievement and Respect.



\*Zoning change 2016 to include area East of Main Road (within Paxton Township)





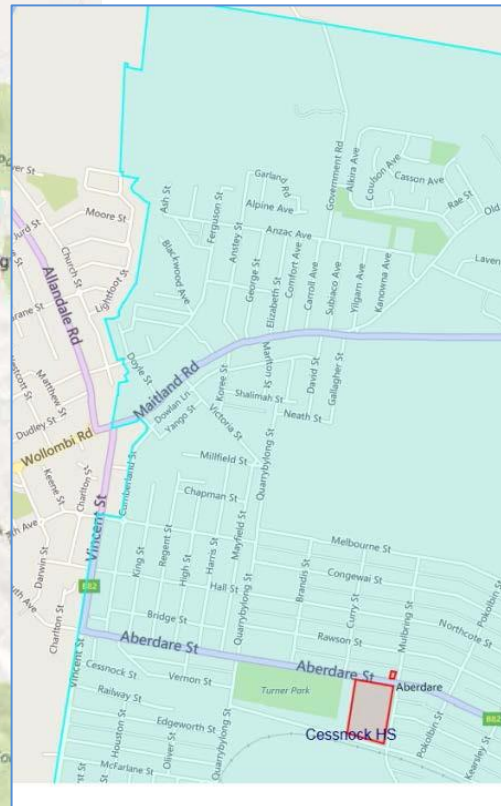
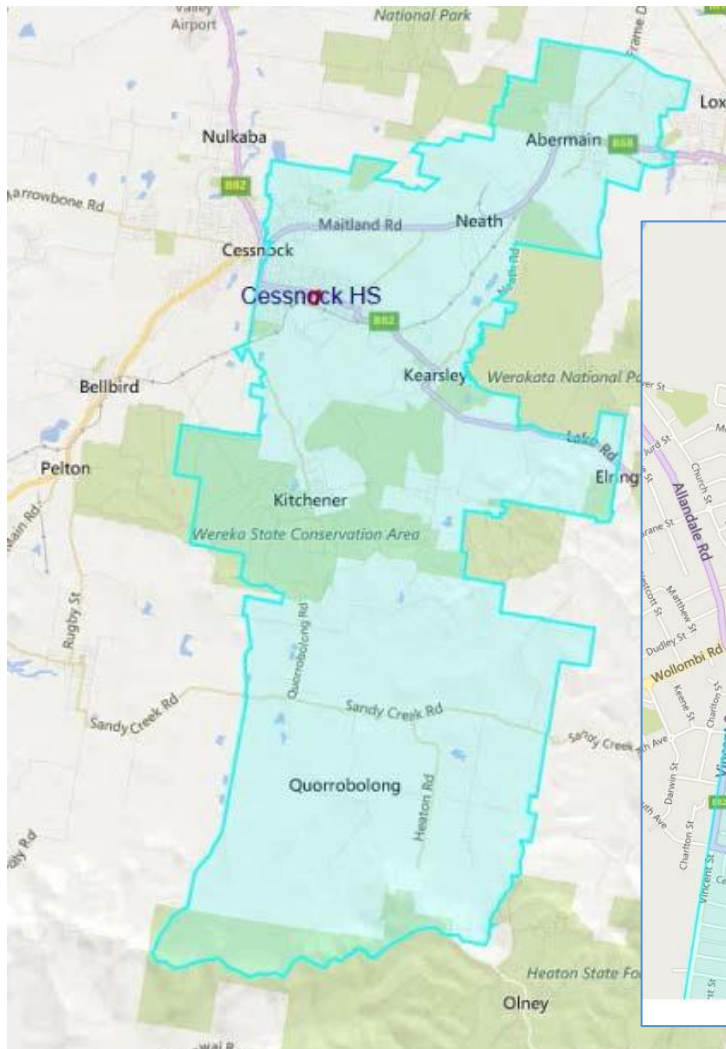
# Cessnock High School

Aberdare Rd, Cessnock 2325

Phone: 49 90 1977

Email: [Cessnock-h.school@det.nsw.edu.au](mailto:Cessnock-h.school@det.nsw.edu.au)

Web: [www.cessnock-h.schools.nsw.edu.au](http://www.cessnock-h.schools.nsw.edu.au)



Cessnock High School is proud of its broad, general education that strives to meet the learning needs of all students. Students have access to an extensive range of opportunities in academic vocational,





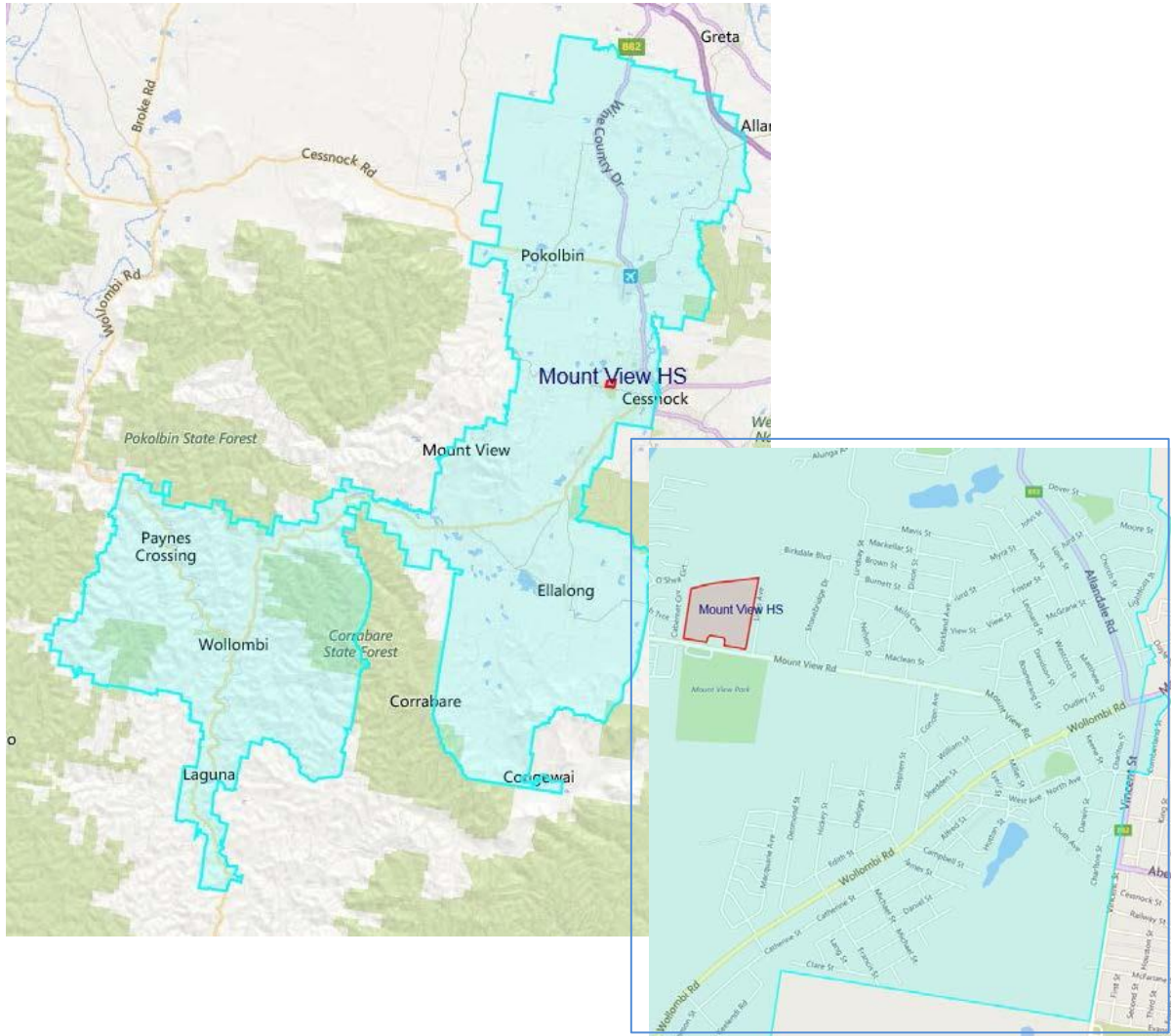
# Mount View High School

106 Mount View Rd, Cessnock 2325

Phone: 02 4990 2566

Email: [mountview-h.school@det.nsw.edu.au](mailto:mountview-h.school@det.nsw.edu.au)

Web: [www.mountview-h.schools.nsw.edu.au/](http://www.mountview-h.schools.nsw.edu.au/)



Mount View High School is a comprehensive coeducational community school that has high expectations of students consistent with each student's ability and the belief that all students can achieve their personal best.





*Thank you for applying to enrol your child at one of our great public schools!*